

单孔固定面盆龙头 安装说明书

Single Mount Lavatory Faucet INSTALLATION INSTRUCTIONS

如需安装支持，配件丢失等，请联系MOEN。
(中国) 400-630-8866
www.moen.cn

PLEASE CONTACT MOEN FIRST
For Installation Help, Missing or Replacement
Parts
(China) 400-630-8866
www.moen.cn

推荐工具

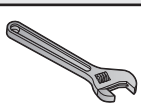
为了安全和让安装和替换变得容易，Moen建议您使用以下工具：

HELPFUL TOOLS

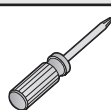
For safety and ease of replacement, Moen recommends the use of these helpful tools.



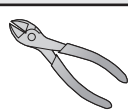
护目镜
Safety Glasses



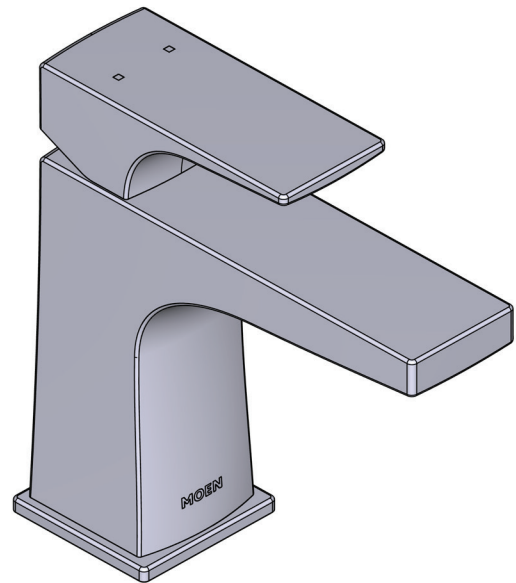
活动扳手
Adjustable Wrench



十字螺丝刀
Cross Screwdriver



剪线钳
Wire Cutters

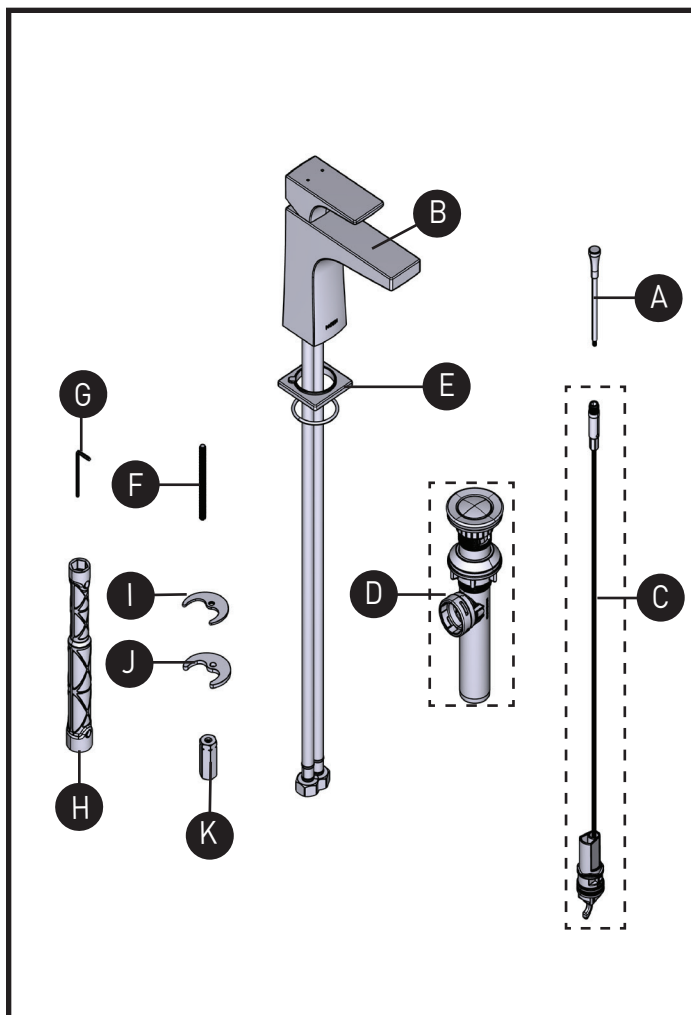


图片仅供参考
(款式因型号而异)

Image is for reference only
(Style varies by model)

记录购买的型号：
(保存安装说明书以备将来参考)

Record Purchased Model Number:
(Save instruction sheet for future reference)



零配件清单

- A. 提拉杆
- B. 水龙头主体
- C. 线控组件
- D. 去水组件
- E. 防水组件
- F. 安装螺杆
- G. 内六角扳手
- H. 套筒扳手
- I. 橡胶垫片
- J. 金属垫片
- K. 安装螺母

Parts List

- A. Lift Rod
- B. Faucet Body
- C. Rope Drain
- D. Drain Assembly
- E. Gasket & Escutcheon
- F. Mounting Screw
- G. Allen Key
- H. Mounting Tool
- I. Rubber Gasket
- J. Metal Gasket
- K. Mounting Nut



移除旧龙头注意事项:

拆除现有水龙头或拆卸阀门之前, 请务必先关闭供水。打开水龙头手柄以释放水压, 确保完全关闭水源。

CAUTION — TIPS FOR REMOVAL OF OLD FAUCET:

Always turn water supply OFF before removing existing faucet or disassembling the valve. Open faucet handle to relieve water pressure and ensure that complete water shut-off has been accomplished.

图标图例 Icon Legend



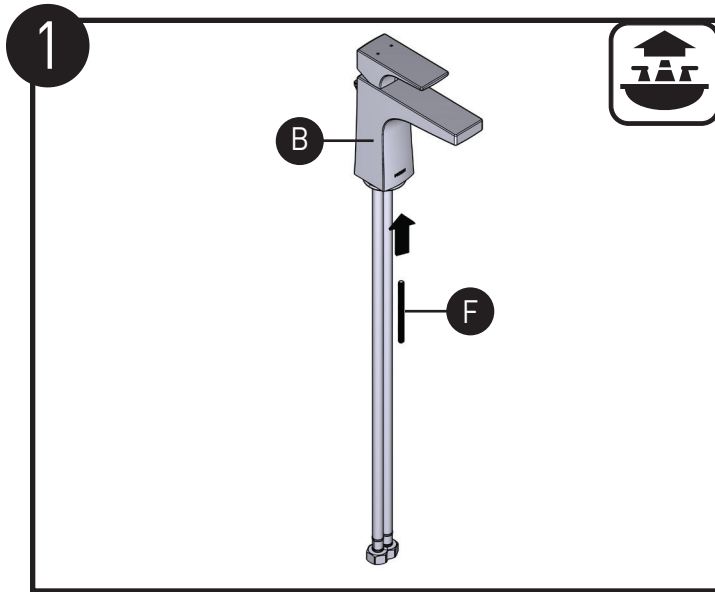
警告
Warning



水槽上方
Above sink

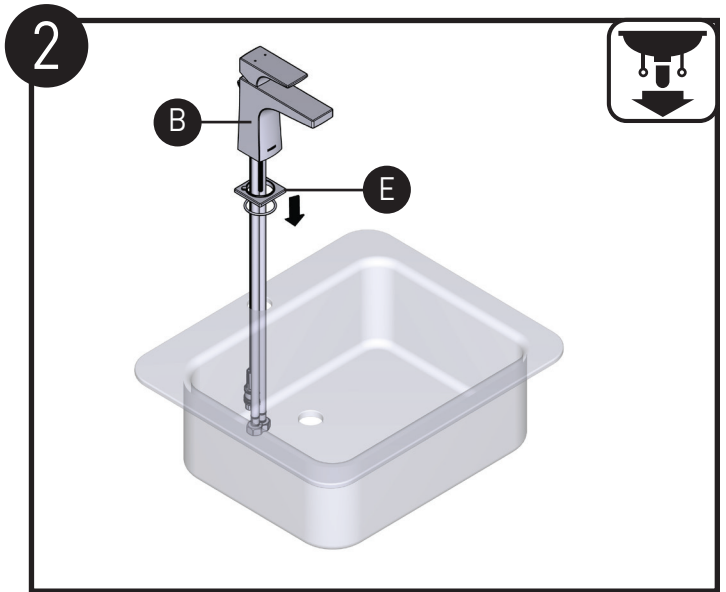


水槽下方
Below sink



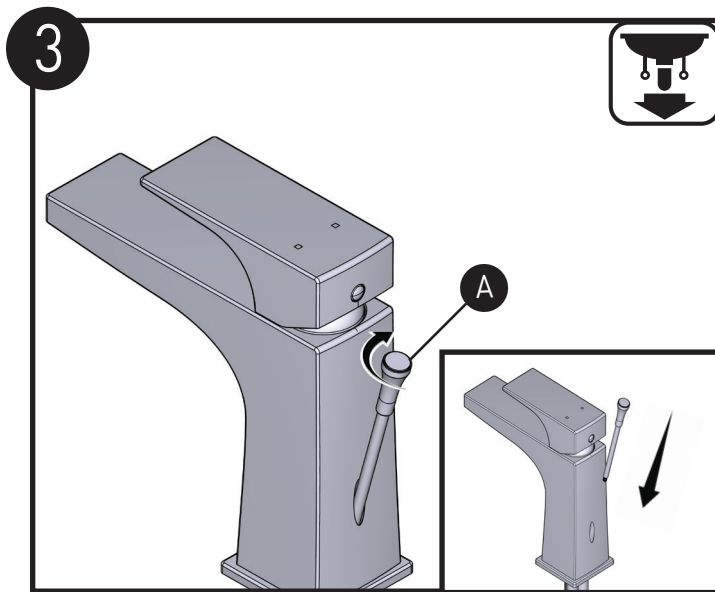
将安装螺杆 (F) 配件装入龙头主体 (B)。

Install Mounting Screw (F) into Faucet Body (B).



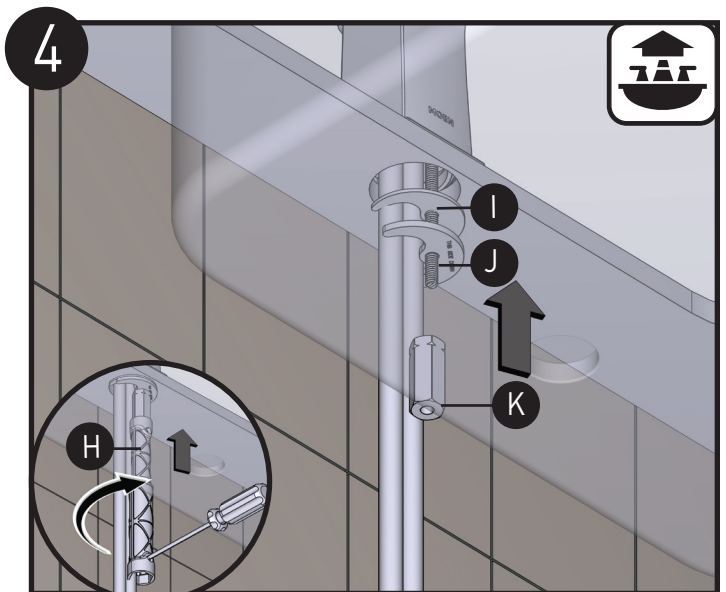
将防水组件 (E) 及龙头主体 (B) 放入面盆中。

Place Gasket & Escutcheon (E) onto the sink and push the Faucet Body (B) into the basin.



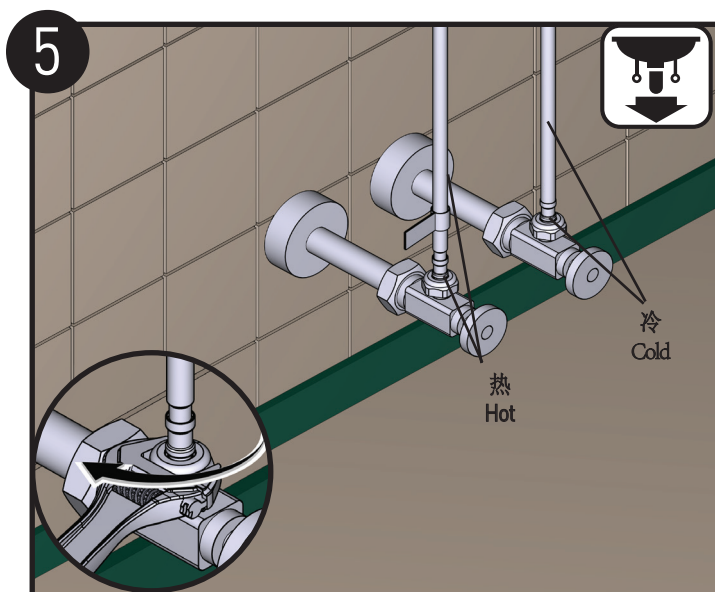
按如图所示的方法，将提拉杆 (A) 与线控组件连接。

Connect the Lift Rod (A) to the wire control assembly as shown in the figure.



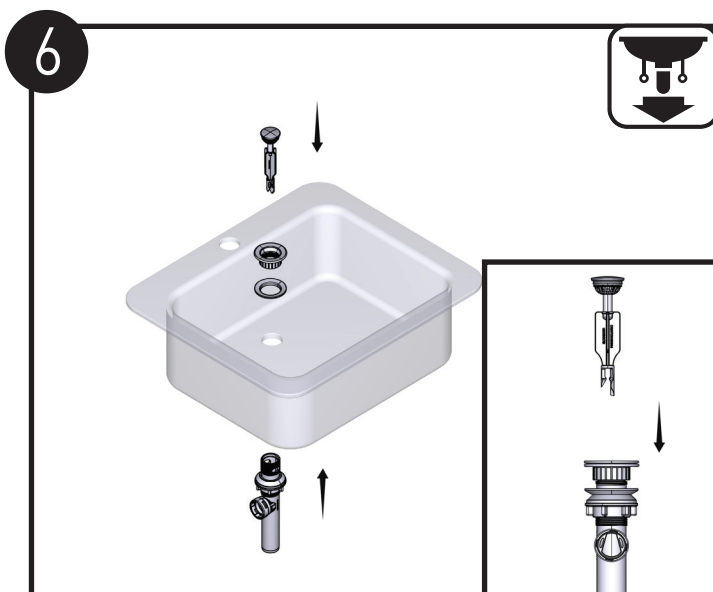
依次安装橡胶垫片 (I)，金属垫片 (J) 和安装螺母 (K)。用套筒扳手 (H) 锁紧安装螺母 (K)。

Install the Rubber Gasket (I), Metal Gasket (J) and Mounting Nut (K) in sequence. Tighten the Mounting Nut (K) with Mounting Tool (H).



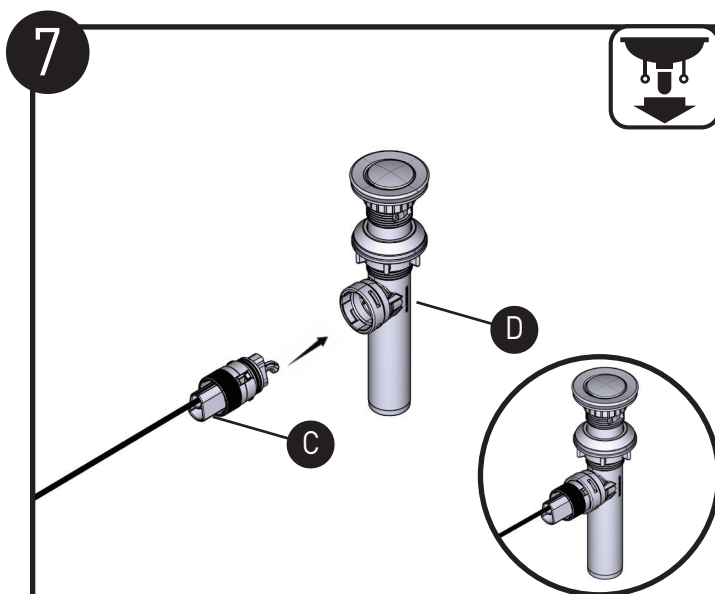
将水龙头冷热水管分别正确地连接到冷热进水口。

Check that hot and cold water supply lines are connected correctly to hot and cold supplies.



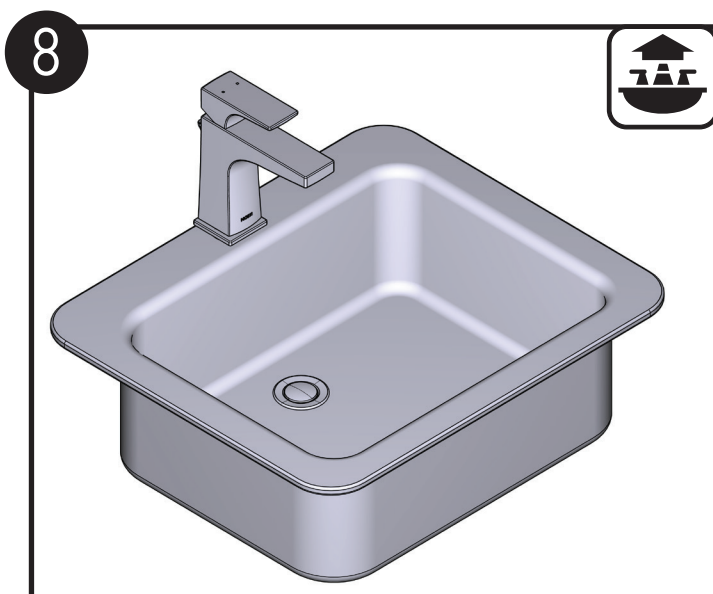
将去水组件 (D) 按如图所示顺序安装。注：水塞底部接口要与去水组件接口平行。

Install the Drain Assembly (D) in the order shown in the figure.
Note: The bottom interface of the plug should be parallel to the Drain Assembly interface.



注意：将线控组件 (C) 插入时，要对准卡扣再内推。然后再顺时针旋紧。

Attention: When inserting the Rope Drain (C), align the snap and push in. And then tighten it clockwise.



安装完成。

Installation completed.

产品售后保修条款

摩恩产品是在高质量标准及生产工艺下制造的，摩恩承诺为消费者购买的产品提供有期限免费保修及终身维修服务。

龙头免费保修期为：阀芯5年，其它附件如软管、花洒、落水、把手、装饰盖、提拉杆、混水器等保修期均为1年有限。均自消费者购买日（以摩恩产品分销商开具的发票或收据上载明日期为准）起计。

免费保修范围为产品及产品配件（如软管、花洒、落水、把手、装饰盖、提拉杆、混水器），由于材质及工艺原因而造成的故障或损坏。免费保修期内，我们将无偿为您提供维修服务及更换发生故障的产品或产品配件。摩恩的售后服务责任仅限于对故障产品的修理，而不延及您因产品故障而发生的其他损失，法律另有规定的除外。您需了解：产品外观碰伤、刻划痕迹，以及滥用及不正当保养所导致的故障或损坏，均不属于免费保修范围。即使在免费保修期内，属下列（1）-（5）情况之一的，需酌情收取修理费用：

1. 不能出示相符的保修卡和有效购买凭证情况的，
2. 未按使用说明告知的使用方法和注意事项造成的故障，
3. 自行拆卸、维修、改装所造成的故障和损坏，
4. 由于不可抗力等外部原因引起的故障和损坏，
5. 由于运输、搬运、挤压等造成的损坏。

对于保修期外或不在保修范围内的产品，如需维修，摩恩将酌情收取上门费、人工费及材料费。

本保修条款仅对原始消费者和酒店行业的购买者有效，并不适用于本产品工业、商业、贸易和非酒店行业的使用。

如对本保修条款内容有任何疑问，请拨打400 630 8866咨询热线，或向当地分销商咨询。

MOEN LIMITED WARRANTY

We offer limited warranty and lifetime maintenance for Moen products, which are all manufactured with high standards of workmanship. The period of warranty shall start from the date of purchase of the product (according to the invoice or receipt issued by Moen distributors) and shall cover a period of the following: The warranty period for cartridge is 5 years. Warranty period of other accessory such as hose, hand shower, waste, assembly, handle, cover, lift rod, aerator is 1 year. This warranty is your coverage against material and workmanship malfunction or defects in Moen products or components (hose, hand shower, waste, assembly, handle, cover, lift rod, aerator). During the warranty period, we offer free maintenance and changing of malfunctioned products or product components. Moen's after sales service liability is limited to the maintenance of faulty items and does not cover your other losses caused by product malfunction, except for otherwise stipulated by law.

Cosmetic damages (scratches, dents, etc.) and malfunction or defects caused by abuse or improper maintenance is not covered by this warranty. Although the warranty period remains valid, in case of the following conditions (1) - (5), the maintenance cost (material cost and labor cost) shall still be charged as the case may be:

1. Corresponding warranty card and valid invoice cannot be presented;
2. Faults were caused by the incompliance with the instructions and precautions provided in the user's manual;
3. Damages and faults were caused by self-actuated dismantling, repair and refit;
4. Faults and damages were caused by external factors such as force majeure;
5. Damages were caused by transportation, unloading and extrusion, etc.

This warranty is valid for the original consumers only (including hotel use), and excludes industrial and commercial use of the product (except for hotel use). This card is only responsible for product maintenance rather than any other liabilities. In the event that the product requires maintenance but exceeds the warranty period, or that the product is not covered by this warranty, labor cost and material cost shall be charged as the case may be.

Please call 400-630-8866 or contact local dealer for any question.

MOEN® 摩恩

合格证 Compliance Certification

产品名称 面盆龙头
Product Name Lavatory Faucet

检验员
Inspector

生产日期
Date of Production

富俊汇赢科技（上海）有限公司
中国（上海）自由贸易试验区新杨公路
1800弄1号4幢207室
邮编：201413

Fortune Brands Innovations (Shanghai) Co., Ltd
Room 207, Building 4, No. 1, Lane 1800, Xinyang Highway,
China (Shanghai) Pilot Free Trade Zone